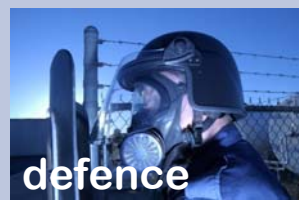




WESTMINSTER
INTERNATIONAL LTD

Excellence through Service
Protecting your world



WG PXRS Portable X-Ray System

Baggage and packages are used by criminals to conceal and transport contraband such as explosives, narcotics and weapons.



Baggage and packages are also used by terrorists as portable bombs, commonly used as a weapon of assassination, terrorism, or guerrilla warfare, to kill individuals or innocent bystanders or to damage buildings or other property.

As it is extremely dangerous to move or transport a suspicious package the inspection should be carried out in situ.

The inspection can be exceptionally dangerous; a security officer may activate a tamper device trigger causing an explosion resulting in loss of life.



A suspicious package may cause the authorities to evacuate the local area until the contents can be safely verified.

The resultant disruption may cause serious delays in the transport industries and loss of output and services in the corporate world together with revenue losses.

It is therefore extremely important for security officers to be able to quickly, safely and effectively inspect suspicious baggage / packages.

The ideal solution to these problems is:-

Westminster's Portable X-Ray Scanning System which is a rapidly deployable self contained inspection system consisting of a very slim detector unit that is placed behind the suspicious bag or package and a transmission unit that is placed in front of the item being inspected.



The system is controlled by a lap top computer that can be connected to the transmitting and receiving units either by cable or by wireless.

WI Code: 10388/2

Westminster International Ltd,
Westminster House,
Blacklocks Hill,
Banbury,
Oxfordshire OX17 2BS,
United Kingdom.
T: +44 (0)1295 756300
F: +44 (0)1295 756302
E: info@wi-ltd.com
W: www.wi-ltd.com

The Association of
Police and Public
Security Suppliers



The Defence
Manufacturers
Association



© 2008 Westminster
International Ltd.
All rights reserved.

WG PXRS Portable X-Ray System

The scanned images are displayed on the laptop.

The WG PXRS
Slim detector unit;
Transmission unit;
Control laptop computer.



Vehicle Checking

The WG PXRS can also be used for spot checks on vehicles, where it can provide localised high quality x-ray images even through one or two car doors.



The example, shown below indicates how the WG PXRS can be used to identify the presence of liquid gas within a cylinder on the back seat of a car.

Wall Checking

The WG PXRS can also be deployed to check walls in buildings for concealed items by simply placing the detector one side of the wall and the transmission unit on the other side of the wall.

Features

- ▶ Accurate differentiation of materials;
- ▶ Automatic calibration;
- ▶ Battery & network warning function;
- ▶ Clearest reported image quality on the market;
- ▶ Ideal for non-destructive testing;
- ▶ Image print and save with image properties;
- ▶ Largest active detector area 535 mm x 412 mm;
- ▶ Minimum time on target;
- ▶ Portable, lightweight & self contained;
- ▶ Sees through 25 mm steel;

WI Code: 10388/2

Westminster International Ltd,
Westminster House,
Blacklocks Hill,
Banbury,
Oxfordshire OX17 2BS,
United Kingdom.
T: +44 (0)1295 756300
F: +44 (0)1295 756302
E: info@wi-ltd.com
W: www.wi-ltd.com

The Association of
Police and Public
Security Suppliers



The Defence
Manufacturers
Association



© 2008 Westminster
International Ltd.
All rights reserved.

WG PXRS Portable X-Ray System

- ▶ Simple to use;
- ▶ Suspect packages and through-wall detection;
- ▶ Thinnest 'all-in-one' panel 5 cm detector;
- ▶ Wireless (or cabled) for fast set-up & image acquisition;

Operating System

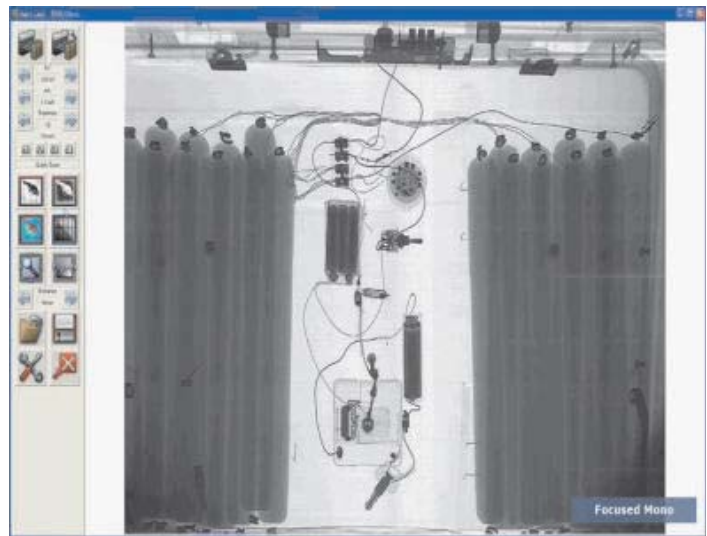
The system uses an innovative, patented hardware design and software algorithms combine to create images of unprecedented clarity. The unique zoom focus feature enhances contrast in dark regions retaining fine-wire contrast without loss of data. This is complemented by smooth, continuous pan / zoom and the ability to rescan all or part of the image at a high resolution.

Image Analysis

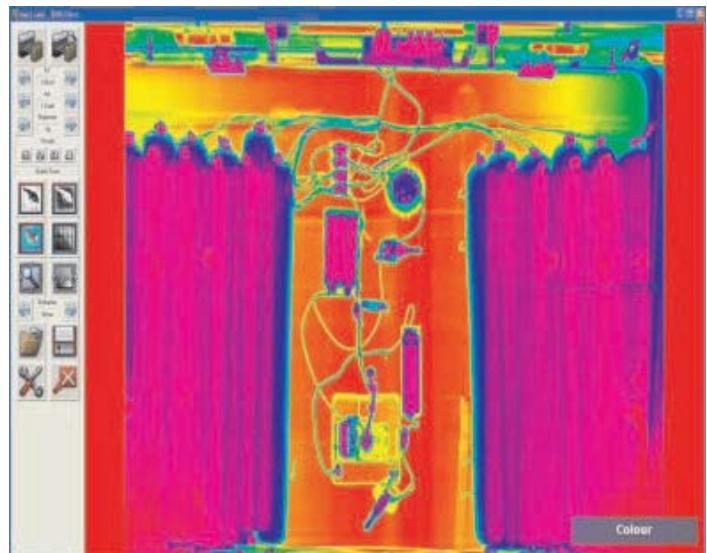
- ▶ Continuous zoom and pan;
- ▶ Data averaging and noise reduction algorithms;
- ▶ Fast and detailed scanning modes;
- ▶ Histogram analysis;
- ▶ Image processing including mono, invert, pseudo colour;
- ▶ Image rotate;
- ▶ Progressive depth penetration analysis;
- ▶ Simple, clear controls;
- ▶ Toggling between normal, reverse and false colour modes.

Typical Images

Normal Image Mode



Colour Image Mode



WI Code: 10388/2

Westminster International Ltd,
Westminster House,
Blacklocks Hill,
Banbury,
Oxfordshire OX17 2BS,
United Kingdom.
T: +44 (0)1295 756300
F: +44 (0)1295 756302
E: info@wi-ltd.com
W: www.wi-ltd.com

The Association of
Police and Public
Security Suppliers



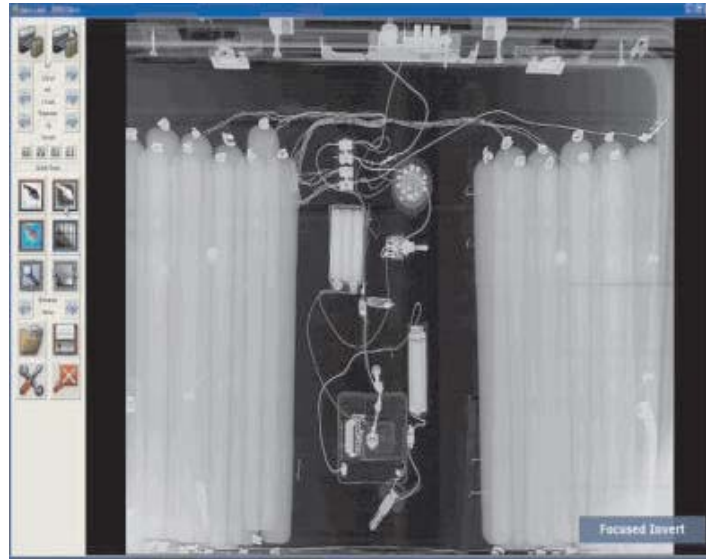
The Defence
Manufacturers
Association



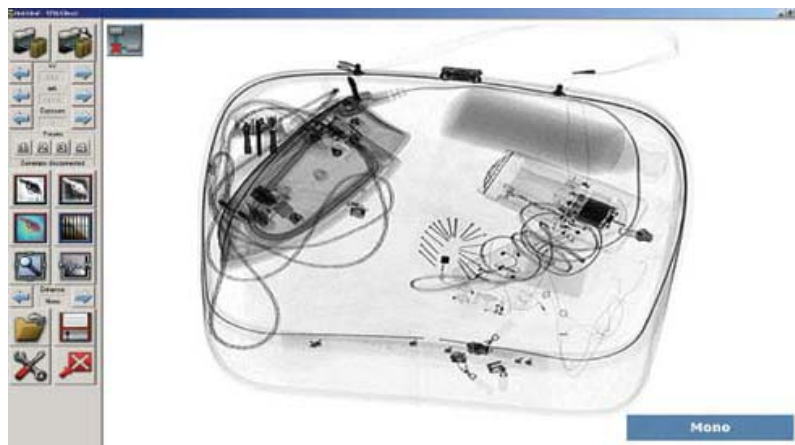
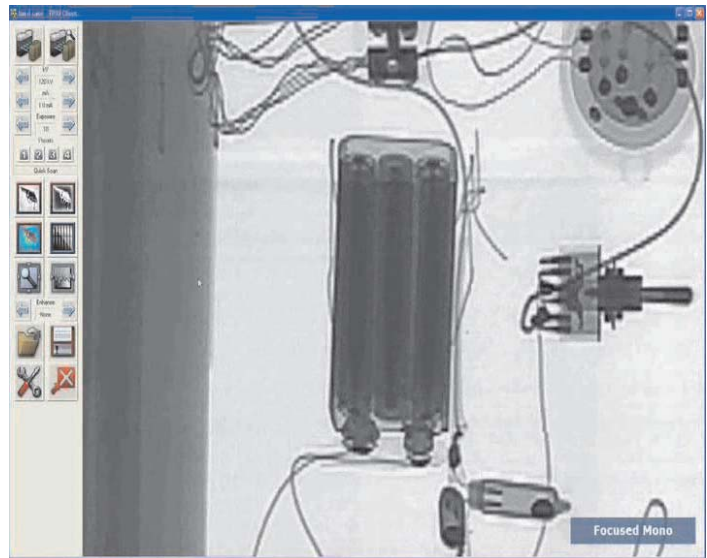
© 2008 Westminster
International Ltd.
All rights reserved.

WG PXRS Portable X-Ray System

Inverse Image Mode



Zoom Focus Image Mode



WI Code: 10388/2

Westminster International Ltd,
Westminster House,
Blacklocks Hill,
Banbury,
Oxfordshire OX17 2BS,
United Kingdom.
T: +44 (0)1295 756300
F: +44 (0)1295 756302
E: info@wi-ltd.com
W: www.wi-ltd.com

The Association of
Police and Public
Security Suppliers



The Defence
Manufacturers
Association



© 2008 Westminster
International Ltd.
All rights reserved.

WG PXRS Portable X-Ray System

Specifications

X-Ray Source

- ▶ Penetration: Over 25mm of steel (with standard source). 160kV, 0.5mA x-ray source also available;
- ▶ Power: Battery operated;
- ▶ Type : 120kV, 1mA constant potential;
- ▶ Weight: 6.5 kg.

X-Ray Detector

- ▶ Detector dimensions: 720 x 623 x 50 mm (external dimensions only);
- ▶ Detector resolution: 800µm Dynamic range 4096 (12-bit);
- ▶ Enclosure: Single hand carry;
- ▶ Imaging area: 535 mm x 412 mm;
- ▶ Scanning orientation: Any direction;
- ▶ Weight: 8 Kg.

Imaging Station

- ▶ Type Notebook;
- ▶ Materials differentiation: Dual energy.

Communications

- ▶ Wireless 802.11g;
- ▶ Cable: Up to 50 metres.

Power Requirement

- ▶ Supply Self-contained rechargeable cells;
- ▶ Battery life: Image capture up to 80 images on one charge.

Environmental

- ▶ Operating temperature: 0°C to +40°C;
- ▶ Survival temperature: -40°C to +80°C;
- ▶ Relative humidity 5 to 95% non-condensing.

WI Code: 10388/2

Westminster International Ltd,
Westminster House,
Blacklocks Hill,
Banbury,
Oxfordshire OX17 2BS,
United Kingdom.
T: +44 (0)1295 756300
F: +44 (0)1295 756302
E: info@wi-ltd.com
W: www.wi-ltd.com

The Association of
Police and Public
Security Suppliers



The Defence
Manufacturers
Association

