



WESTMINSTER
INTERNATIONAL LTD

Excellence through Service
Protecting your world



fire



safety



security



defence

WI Code: 10425

Westminster International Ltd,
Westminster House,
Blacklocks Hill,
Banbury,
Oxfordshire OX17 2BS,
United Kingdom.
T: +44 (0)1295 756300
F: +44 (0)1295 756302
E: info@wi-ltd.com
W: www.wi-ltd.com

The Association of
Police and Public
Security Suppliers



The Defence
Manufacturers
Association



© 2008 Westminster
International Ltd.
All rights reserved.

Page 1 of 2

WGL Portable X-RAY Scanner

Bumble-bee 240-TV x-ray scanner

Applications

- ▶ Inspection of luggage, packages, cargo and vehicles for detecting weapons, drugs and explosives;
- ▶ Search for bugs and built-in devices in premises (walls, furniture, office equipment, communication devices).

Capabilities

- ▶ 40 mm of steel penetration;
- ▶ Three dimensional perception of contents;
- ▶ Original software for image processing.

Features

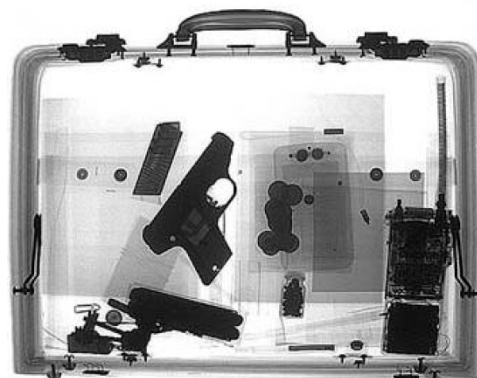
- ▶ Ability to acquire stereo-images;
- ▶ Unique ratio of mass and power consumption to X-raying capability;
- ▶ Instantly ready to operate.

Advantages

- ▶ Able to operate on built in battery-power for 5 hours;
- ▶ With the correct set-up the unit can operate in temperatures from -20 to +50 ° C.

Design

- ▶ Mains or built-in battery power supply;
- ▶ X-ray device and converter are packed in light reinforced bags, which are used as transport and operational packing. Control and processing unit is housed in a hermetic shockproof case;
- ▶ Units are connected by a 25 m long flexible frost-proof cable.



Specifications

Control and Processing Unit

Image acquisition time: 5 seconds;

Image processing functions: x 0.5 – 5 digital zoom, fine control of brightness and contrast; grid; negative-positive; pseudo colour; emboss; nonlinear filtration; stereo-image; region of interest (ROI);

Database capacity: not less than 40,000 frames with audio comments;

Weight: 10.5 kg;

Overall dimensions: 490 x 185 x 358 mm;

Operational temperature range: +5 - +45 ° C.

WGL Portable X-RAY Scanner

X-Ray Unit (Bumble Bee-240 A)

X-ray tube voltage: 240 kV;

X-raying capability for steel: 40 mm;

Weight: 9.6 kg;

Overall dimensions: 387 x 110 x 210 mm;

Operational temperature range: -40 - + 60 ° C.

CONVERTER

Inspection area: 240 x 320 mm / 320 x 420 mm;

Resolution: 0.12 mm / 0.16 mm of copper wire;

Video camera unit: Industrial camera with automatic sensitivity control;

Matrix: 768 x 576 pixels;

Weight: 4.9 kg / 6.6 kg;

Overall Dimensions: 435 x 200 x 365 mm / 512 x 254 x 475 mm.

Ancillaries

Charging Unit for Bumble Bee-240 A



Built-in battery and a specialised charge unit of the X-ray unit Bumble Bee-240 A.

- ▶ **Number of images acquired by the Bumble Bee-240TV system without recharging the X-ray unit battery:** up to 200;
- ▶ **Full battery charging time from the specialised charge unit:** no more than 6 hours;
- ▶ **Voltage supply of the charging unit:** ~ 90 – 240 V, 50 / 60 Hz;
- ▶ **Power consumption of the charging unit:** no more than 25 W.

The battery can be charged without removing it from the X-ray unit. A spare battery can be delivered with the X-ray unit. Easy-to-remove construction allows continuous operation, changing a discharged battery with the spare.

Tripods for BumbleBee Scanners

- ▶ **Height:** 440 - 2430 mm;
- ▶ **Maximum load:** 12 kg;
- ▶ **Adjustment of a position of an X-ray unit:** 360° turn in horizontal plane, -25 - +90° and -30 - +90° in two vertical planes.

Tripod for a converter

- ▶ **Height:** 420 - 2300 mm;
- ▶ **Maximum load:** 7.5 kg;
- ▶ **Adjustment of a converter position:** 360° turn in horizon plane and -30 - +90° in two vertical planes. The tripods are delivered in transport bags.



WI Code: 10425

Westminster International Ltd,
Westminster House,
Blacklocks Hill,
Banbury,
Oxfordshire OX17 2BS,
United Kingdom.
T: +44 (0)1295 756300
F: +44 (0)1295 756302
E: info@wi-ltd.com
W: www.wi-ltd.com

The Association of
Police and Public
Security Suppliers



The Defence
Manufacturers
Association

