



WESTMINSTER
INTERNATIONAL LTD

Excellence through Service
Protecting your world



fire



safety



security



defence

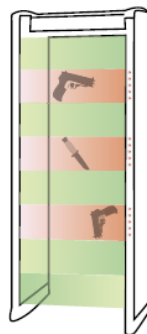
M-200 Walkthrough Metal Detector

Unique Multi-Zone Principle

The M-200 walk-through metal detector features a unique multi-zone principle to guarantee first-rate performance. Each detection zone functions as an independent detector and automatically increases discrimination by reducing the cumulative signal effect caused by distributed harmless objects.

Key features

- ▶ Unique Multi-Zone Principle;
- ▶ Uniform Detection;
- ▶ Excellent Discrimination;
- ▶ User-Friendly Interface.



Eight Independent Detection Zones

- ▶ Target objects are independently detected in each zone;
- ▶ Signals from harmless objects do not combine to produce unnecessary alarms;
- ▶ Provides more uniform detection;
- ▶ Zone display illuminates at the level where detection occurs distributed.

The Benefits of the Multi-Zone Principle

- ▶ Superior discrimination;
- ▶ Reliable detection of threat items;
- ▶ High traffic throughput;
- ▶ Optimum immunity to environmental interference and external stationary metal.

Uniform Direction

The sensitivity of the entire detector and individual zones can be easily adjusted. This flexibility allows the M-200 to operate in difficult environments. It performs optimally even in locations where external stationary metal impairs the detection uniformity of conventional detectors. For example, when an M-200 must be used in proximity to large metal objects, its multi-zone structure enables detection uniformity to be easily restored. If the metal detector is located above a metal floor, the sensitivity can be adjusted to give uniform performance.

Security

The switches, cables and connectors are built in, guaranteeing tamper-proof and continuous operation. The remote control unit can be locked inside the crosspiece or kept in the possession of authorized persons only, preventing anyone else from modifying the detector's parameters.

The remote control unit utilizes passwords to prevent unauthorized access to the detector's parameters.



WI Code: 10399/1

Westminster International Ltd,
Westminster House,
Blacklocks Hill,
Banbury,
Oxfordshire OX17 2BS,
United Kingdom.
T: +44 (0)1295 756300
F: +44 (0)1295 756302
E: info@wi-ltd.com
W: www.wi-ltd.com

The Association of
Police and Public
Security Suppliers



The Defence
Manufacturers
Association



© 2008 Westminster
International Ltd.
All rights reserved.

M-200 Walkthrough Metal Detector

User-Friendly Interface

All parameters are set through a remote control unit. An alpha-numeric display shows the results of parameter adjustments, traffic counts and self-testing diagnostics. The remote control unit can be programmed to operate one or several detectors.

Statistics

Intelligent traffic and alarm counters calculate the traffic flow and resultant alarms. The counters both increment and decrement, thereby giving a true traffic count. The optional MeteorNet Remote Security Monitoring System makes it easy to collect statistics while controlling and monitoring multiple Meteor family walkthrough metal detectors.

Zone Display

The zone display identifies the level(s) at which detected object(s) are carried. This enables security personnel to immediately target metal objects and ensures that maximum throughput can be maintained in high traffic locations.

Accessories



Remote Display Unit: Remote zone display unit can operate at a distance of up to 65 m (213 ft) from the detector. It shows the position of detected items and generates an audible alarm.

Additional Zone Display: For bi-directional operation.

Battery Backup System: For 2 hour runtime when no power is available.

Carry Bag: Ideal for transportation and/or storing.



Protective Boots: ABS-plastic boot protects coil panels from floor washing liquids and scuffmarks. The boot is easy to install and change. It will have no effect on the usability of the floor-level zone display. Different colours are available upon request.

Colour & Finishing Options:

Special colours, Decorative laminates or real wood finish.

MeteorNet Remote Security Management System: collects the statistics on traffic flows and alarm data of up to 99 M-series walkthrough metal detectors and generates easy-to-read reports. It allows detector security levels to be changed from a central PC.

Gate Wheels Set: For easy mobility of the metal detector in upright position.

Test Pieces (ADA Compliant): To assist in calibration and testing.

Conformity

Safety Standards EN 60950 (Electrical safety)

EMC Standards EN 50081-1 (Emission), EN 50082-1 (Immunity)

Other Standards NILECJ-0601, security levels 1-5 (covers the design and performance of walk-through metal detectors), FAA approved. Safe for users of heart pacemakers, pregnant women and magnetic recording materials.

CE Compliant Yes

WI Code: 10399/1

Westminster International Ltd,
Westminster House,
Blacklocks Hill,
Banbury,
Oxfordshire OX17 2BS,
United Kingdom.
T: +44 (0)1295 756300
F: +44 (0)1295 756302
E: info@wi-ltd.com
W: www.wi-ltd.com



© 2008 Westminster
International Ltd.
All rights reserved.

M-200 Walkthrough Metal Detector

DDA Compliant Optional Internal width of 813 mm (32 inches) is available to comply with U.K. Disability legislation.

Specifications

Ambient Operating Temperature: From -10 °C to +55 °C (14 °F to 131 °F)

Humidity: Up to 95%, no condensation

Protection: IP 20 (EN 60529)

AC Power: 90-264VAC/45-65Hz

Battery: 24-35V DC

Consumption: 45W

Fuse: T1A 5x20 mm

Power Cord: included

Automatic adjustment, without manual intervention, for power fluctuations over the voltage range of 90 to 264V AC.

Alarm: Audible/visible alarm.

Alphanumeric display and Zone display. Relay contact for remote alarm (SPDT)

Sensitivity: 100 sensitivity steps per program

Zone Sensitivity Adjustment: All eight zones are individually adjustable (0 to 255 %) with respect to the overall sensitivity level

Calibration: Automatic or manually set.

An automatic sensitivity function selects the appropriate sensitivity for a specific weapon or test object. This eliminates the time consuming trial and error method.

Reset Time: Adjustable

Interference Suppression: Digital filtering by signal processor and user selectable frequency selection

Advanced Self-Adjusting Diagnostics:

User-friendly diagnostics identify fault condition

Warranty: Two (2) years, parts and labour

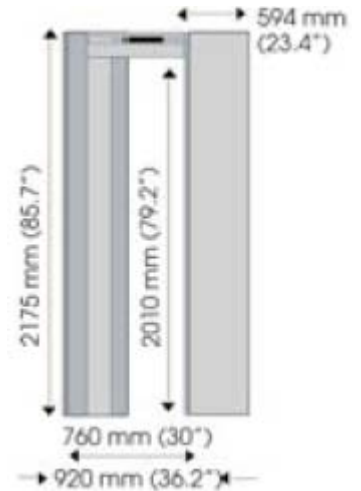
Network Connections: MeteorNet Remote Security Monitoring System compatible (RS422 and Ethernet)

Shipping Weight & Volume:

Total: shipping weight: 71 kg

Shipping volume: 0.47 m³ (16.61 cu ft)

Net Weight: 50.7 kg



WI Code: 10399/1

Westminster International Ltd,
Westminster House,
Blacklocks Hill,
Banbury,
Oxfordshire OX17 2BS,
United Kingdom.
T: +44 (0)1295 756300
F: +44 (0)1295 756302
E: info@wi-ltd.com
W: www.wi-ltd.com

The Association of
Police and Public
Security Suppliers



The Defence
Manufacturers
Association

